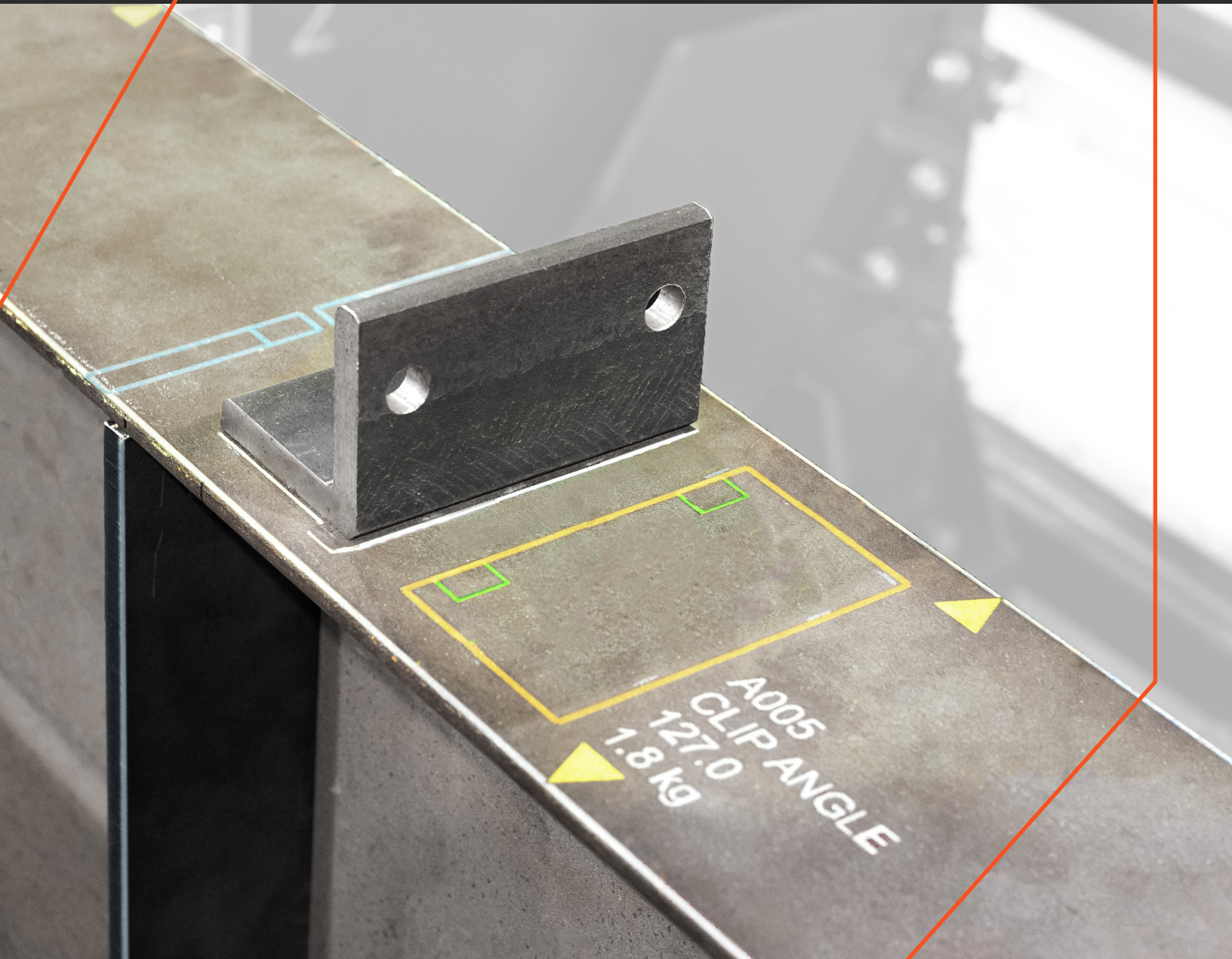


# Fitting Assistant

For Structural Steel



**LAYOUT  
MASTER**

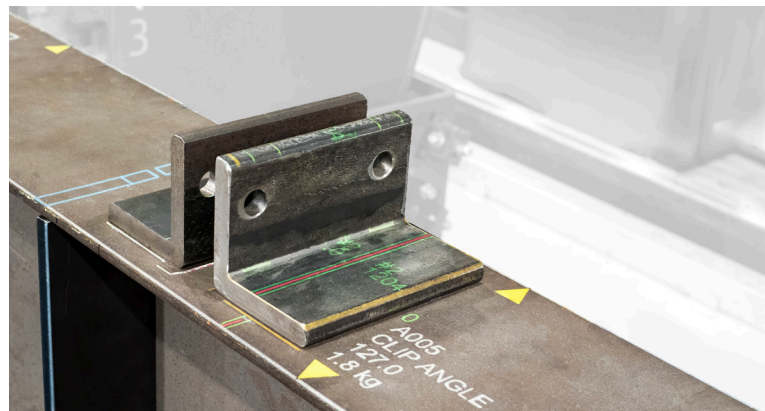


# What Is The LayoutMaster?

Augmented Reality Fitting Assistant For Structural Steel



## The Smart Tool That Turns Any Operator Into an Expert Fitter in Minutes!



The LayoutMaster combines your 3D CAD details with color laser technology and AGT's award-winning Cortex software to project all the information needed to assemble parts on a beam quickly and precisely.

With the LayoutMaster, you'll never need a measuring tape or a drawing again. Simply select the right beam assembly from the menu, align the projector with your beam origin and start fitting. All the information required to fit error-free is available to your operator: part contours (2D and 3D), part descriptions, welding information and more. The projected information is user configurable - allowing you to personalize each layer by color and line thickness to facilitate visualization or group features and layers to work best for your application.

### Reduce Your Reliance On Skilled Labor

Many companies struggle to find and retain reliable employees with the right skill sets. The LayoutMaster system is easy to learn and can be operated by anyone with the skills to use a smartphone. No blueprint reading, no measuring, no problem!

### The High-Definition Projector Travels On An Overhead Rail

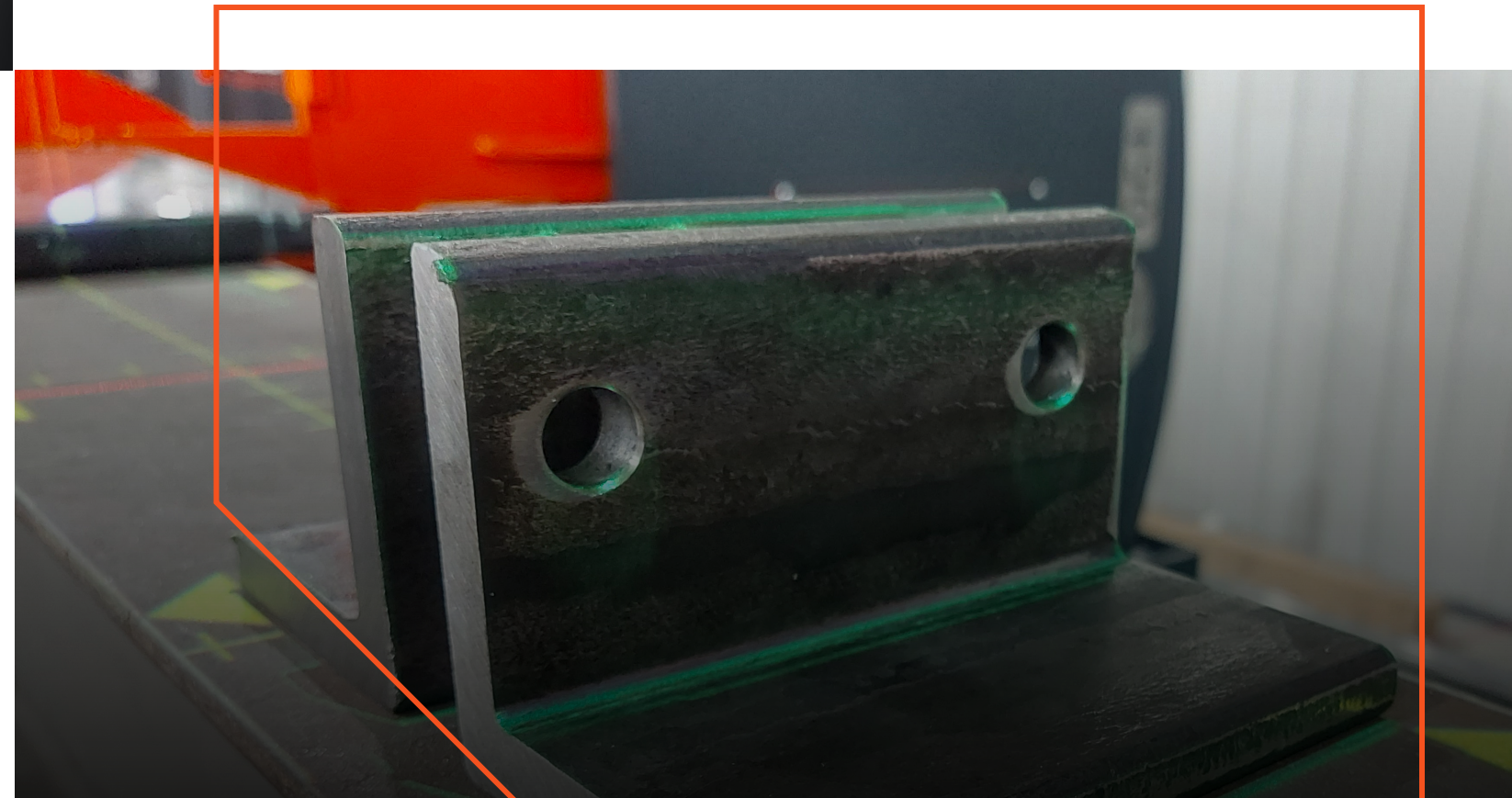
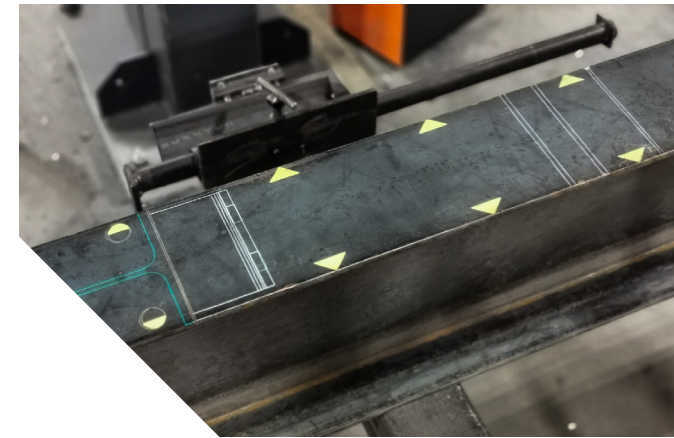
Freeing up floor space for the operator to work unimpeded the LayoutMaster also saves floor space by producing as much fit product in one station as 2-3 manual fitting stations. When combined with the BeamMaster, the LayoutMaster fits within the same footprint providing fast, effective fitting assistance in the same floorspace as your robotic welding system.

### Eliminate The Fitting Production Bottleneck

With the ability to instantaneously project the required details directly on the workpiece the LayoutMaster saves time associated with reading and interpreting drawings, measuring, marking and verification. Needing only a few seconds to establish the orientation of the beam and re-verifying over the beam length, the LayoutMaster turns a tedious fitting operation into a simple and fast pick-place-tack operation.

### Eliminate Costly Errors At The Source

Assembly information is projected directly from CAD details - eliminating the need to interpret drawings and the associated errors. Detailed part information is immediately and conveniently available to the operator to ensure that the right parts end up exactly in the right place.





1 819 693-9682  
info@agt-group.com  
agrobotics.com

Autonomous Robotic Welding For Heavy Fabrication.

Authorized Agent



Worldwide Support